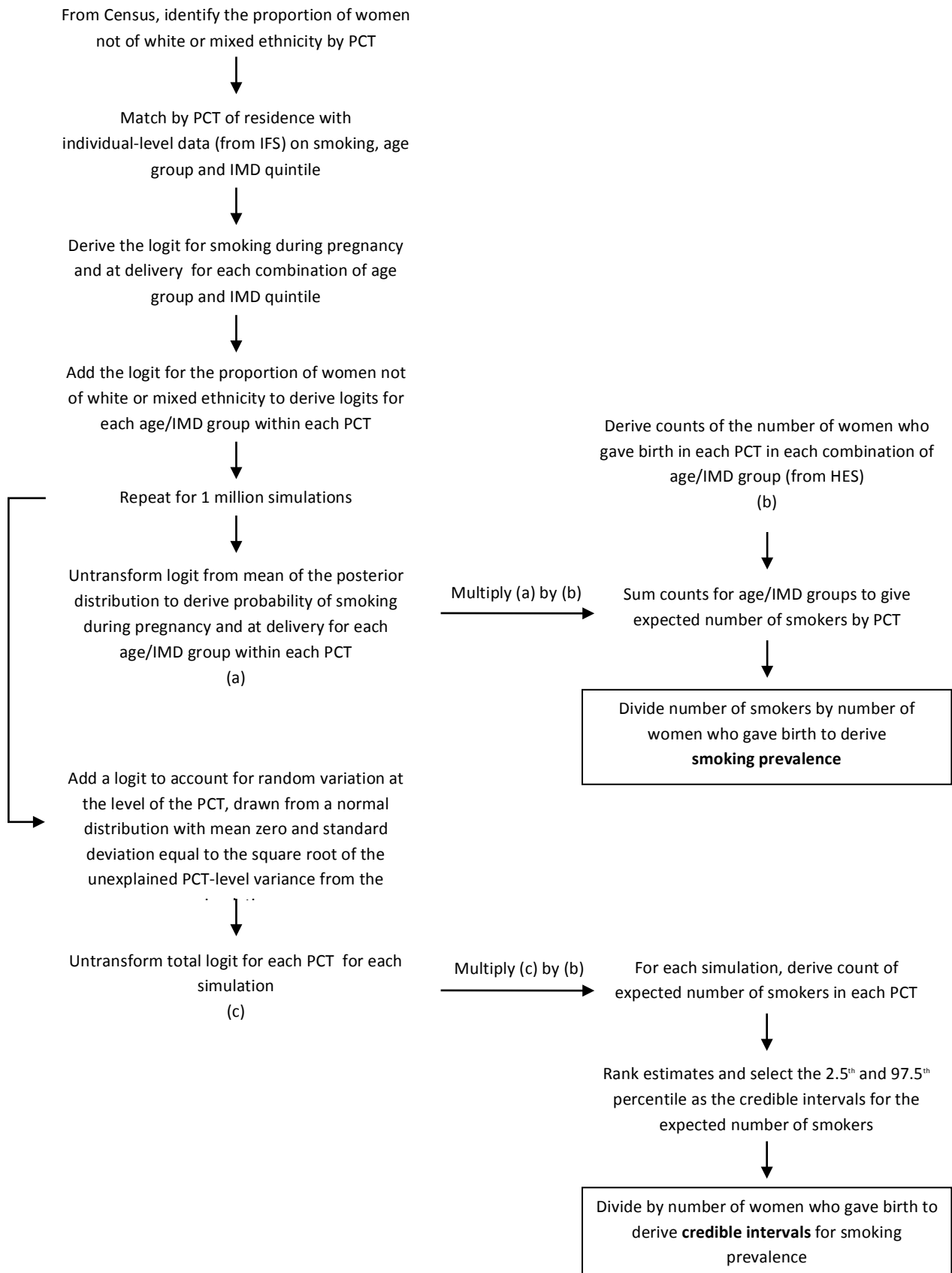


## Additional file 1: Overview of methods and calculation of Bayesian 95% credible intervals



### Derivation of smoking status variables

IFS participants were asked the following questions about their smoking behaviour:

- Have you ever smoked cigarettes? (yes/ no)
- Have you smoked at all the last two years? (yes/ no)
- Do you smoke cigarettes at all now? (yes/ no)
- Did you smoke cigarettes at all during pregnancy, after you found out you were pregnant? (yes/ no)
- When did you finally give up? (before you knew you were pregnant/ as soon as you found out you were pregnant/ later on during your pregnancy/ after the birth)
- Since you knew about your pregnancy, did you do any of the following? (stopped smoking temporarily/ used nicotine replacement therapy/ cut down on the number of cigarettes smoked each day/ increase the number of cigarettes smoked/ none of these)

The IFS data providers used participants' responses to these questions to generate a derived smoking status variable categorised as follows:

- 1 Never smoked
- 2 Gave up over a year before pregnancy
- 3 Gave up less than a year before pregnancy
- 4 Gave up on confirmation of pregnancy
- 5 Gave up later in pregnancy, stayed quit
- 6 Gave up, but started again
- 7 Cut down
- 8 Did not cut down

Categories 4 to 8 inclusive were used to indicate smoking at any point during pregnancy, including between conception and confirmation of pregnancy. Categories 6 to 8 inclusive were used to indicate smoking at delivery.